

‘Great to return to the Peaks again – stone walls, rolling hills, sheep, cattle – so beautiful. Would like to take the view home, had a great break, lovely to be back in Derbyshire.’

‘Wonderful location to base our first visit to Derbyshire – we loved our stay here. A restful holiday in a lovely place.’



HEATHY LEA at Chatsworth Derbyshire

HEATHY LEA BARN	SLEEPS 4
STABLE COTTAGE	SLEEPS 2/4

Heathy Lea Barn and Stable Cottage are two properties converted from within the former eighteenth century farmyard at Heathy Lea on the edge of Chatsworth Park, with far-reaching views over this stunning parkland scene and hills beyond. The grounds of Heathy Lea open directly into the Park where guests are free to walk at any time (with their

dogs on a lead) through the 1,100 acres of Chatsworth Park which owes much of its appearance to Lancelot ‘Capability’ Brown. Look out for the abandoned millstones on the rock edges, the knarled oak woodland and the resident herds of red and fallow deer as you walk the short distance (20–30 mins) to Chatsworth house and garden.



HEATHY LEA BARN
First floor



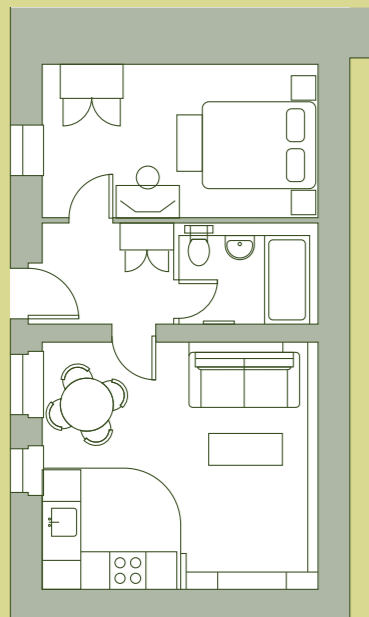
View of owner's garden



STABLE COTTAGE on right

Chatsworth Estate Holiday Cottages
telephone 01246 565379
email holidaycottages@chatsworth.org
www.chatsworth.org



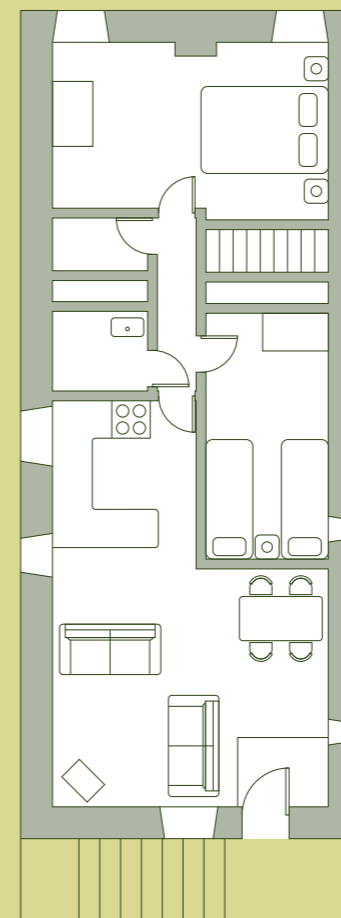


STABLE COTTAGE sleeps 2

The Stables has a modern interior finished to a very high standard with some thoughtful and interesting touches, where comfort is a priority all year round.

There is an entrance lobby with a small boot/coat cupboard; a beautifully furnished double bedroom; a large, luxurious shower room; and an open plan living room with well-equipped kitchen and dining areas and a sofa bed to extend the property to accommodate occasional guests.

The cottage is reached by a private driveway and has its own parking. The accommodation is at ground level with its own paved, private terrace with barbeque and garden furniture and Heathy Lea Brook babbling in the background.



HEATHY LEA BARN sleeps 4

The Barn is accessed by an external flight of stone steps. The accommodation comprises two bedrooms (one double and one twin), shower room, separate lavatory, well equipped modern kitchen, and a comfortable open plan living/dining room.

The Barn has been furnished and decorated to an excellent standard, combining elements of traditional comfort with contemporary design. Outside, the barn has access to its own garden area overlooking the park, complete with barbecue and garden furniture.

