

# RIVERSDALE FARM at Monsal Dale Derbyshire

**R**iversdale Farm lies in the heart of the Peak District, in one of Derbyshire's finest Dales and only three miles north of the delightful market town of Bakewell. Situated on the banks of the River Wye guests are surrounded by the most magnificent countryside but are within easy reach of the many Peak District attractions. The nearest shop is 1½ miles and public house is just half a mile. There is also a daily bus service to Bakewell from Monsal Head which is half a mile away.

Greenhills and Brackendale are two semi-detached cottages, adjacent to the caretaker's cottage, which have been sympathetically and tastefully converted from an 18th century barn. In the spring of 2007 both cottages were totally refurbished providing very comfortable and cosy accommodation for 4/5 people each.

Outside facilities include a large communal garden (which is safe for children) with garden furniture and off road parking for two cars per cottage.

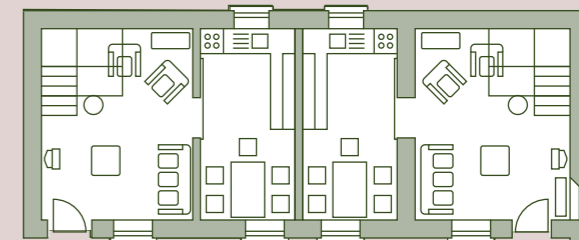
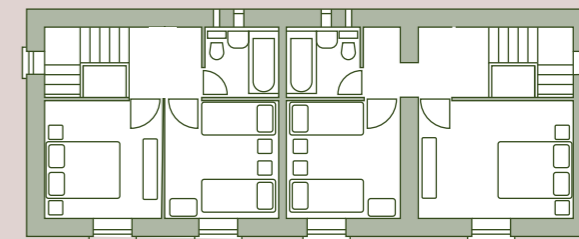
**GREENHILLS COTTAGE** SLEEPS 4/5  
**BRACKENDALE COTTAGE** SLEEPS 4/5



## Accommodation

Both cottages have a good sized living room with a quality sofa bed for an extra guest, flat screen television, DVD/VCR and radio/CD/cassette player. The fully fitted and well equipped kitchen/dining room has a fridge/freezer, dishwasher, washer/dryer, microwave oven, electric cooker and hob.

On the first floor each cottage has one double bedroom, with five foot bed, one twin bedroom and one bathroom with shower over the bath.



**GREENHILLS COTTAGE**  
First floor  
Ground floor

**BRACKENDALE COTTAGE**  
First floor  
Ground floor



Chatsworth Estate Holiday Cottages  
telephone 01246 565379  
email [holidaycottages@chatsworth.org](mailto:holidaycottages@chatsworth.org)  
[www.chatsworth.org](http://www.chatsworth.org)



CHATSWORTH

'Absolutely delightful and I will certainly be back. Everything was excellent. All mod cons, wonderful décor.'

'The safe enclosed garden with the river running along behind the fence was superb.'

'We have stayed in similar cottages in a number of locations over several years and this was without doubt the best. The whole location was gorgeous.'