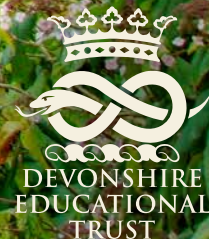


Plant hunters

The Chatsworth Pinetum



Learning resource presentation: KS2

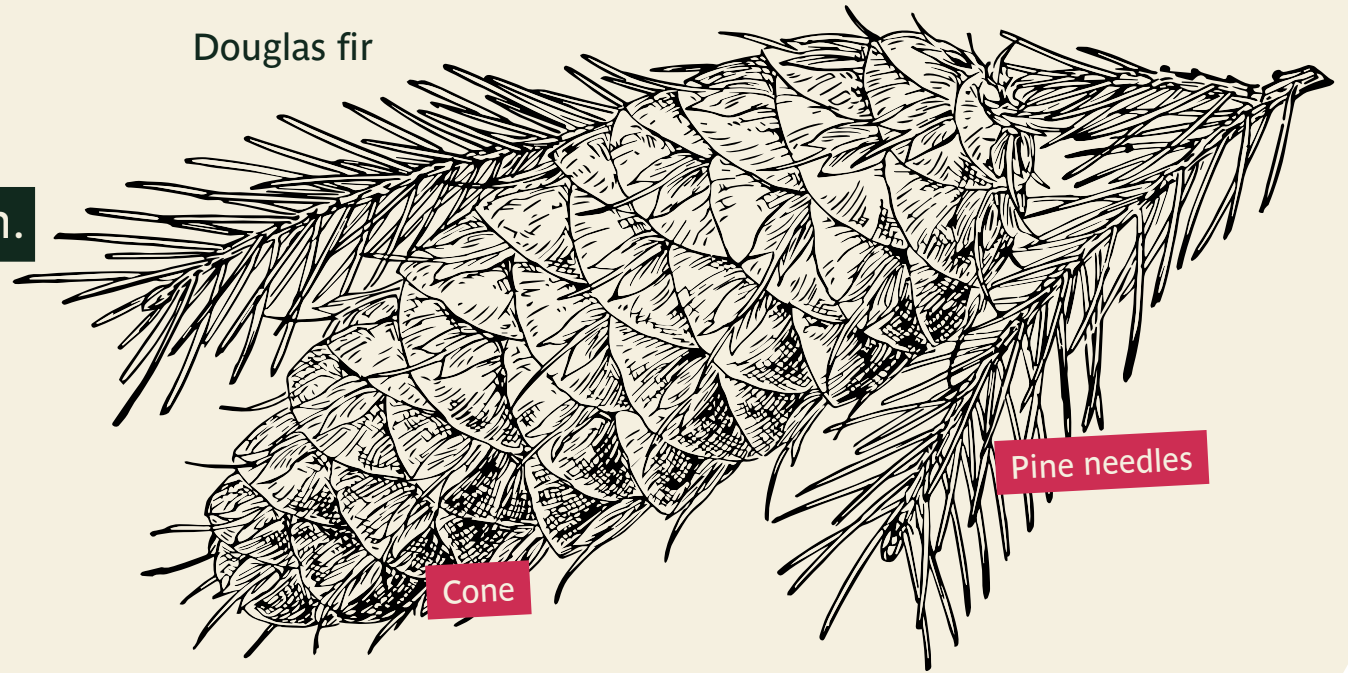


Conifers

A conifer is a tree that has **cones** in which its seeds grow.

Conifers are **evergreen**, which means they do not lose their leaves in Autumn.

Conifer leaves are long and thin and look like **needles**.



Conifers

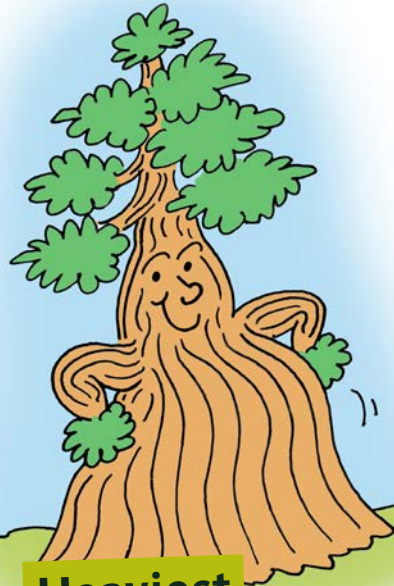
There are lots of different conifers, such as firs, cypresses, larches, redwoods, pines and cedars.

Conifers are record breaking trees:



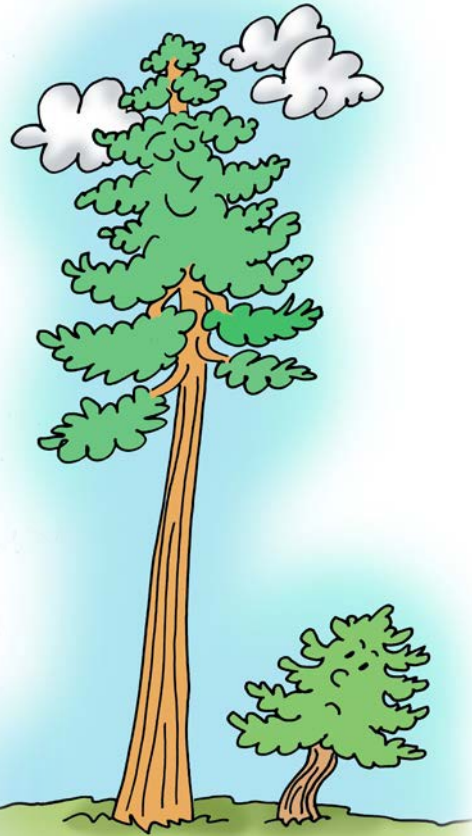
Oldest

The oldest Bristlecone pine is more than 5000 years old.



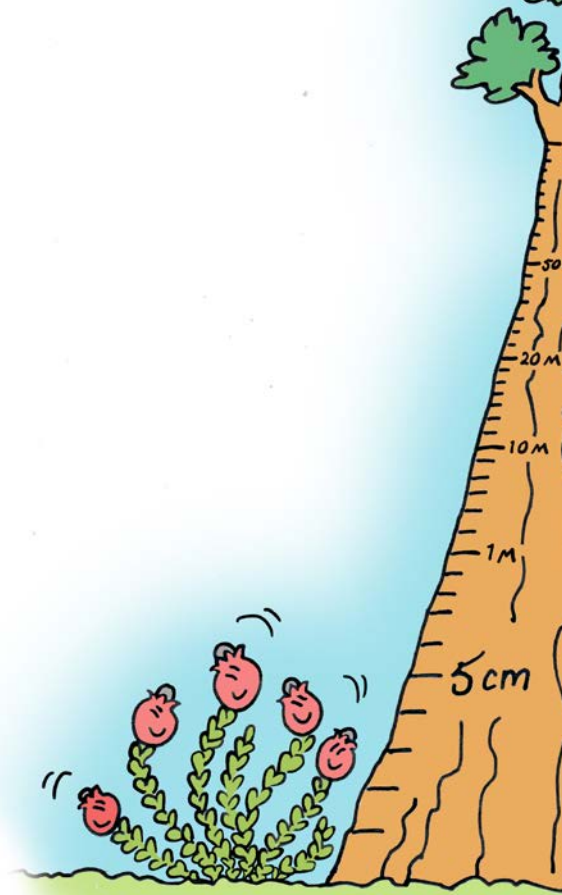
Heaviest

Giant sequoias can weigh more than 900 tons.



Tallest

Californian redwood can grow to more than 110 metres (360ft) high.



Smallest

New Zealand pygmy pines grow to only 5cm (2 inches).



Plant hunters

Victorians were fascinated by plants.

The 6th Duke sent plant hunters around the world to bring back amazing trees and interesting plants.



The Pinetum

A collection of pine trees is called a **pinetum** and the Chatsworth Pinetum was the **first in England.**

Here are some of the trees in the pinetum:



Douglas fir

North America (west)

Giant redwood

California

Chatsworth

Cedar of Lebanon

Lebanon (Eastern Mediterranean)

Japanese white pine

Japan

Norfolk Island pine

Norfolk Island (Pacific Ocean)

Monkey puzzle

Chile and Argentina

